

BRIGADOON



BRIGADOONVILLAGE.COM

Features

2,590 sq. ft. Total
3 Bedrooms
2 1/2 Baths

Amenities

Fireplace in Great Room
Coffered Great Room Ceiling
Master Suite with Fireplace and Sitting Area
First Floor Laundry
Veranda spanning the Great Room, Dining Room and Kitchen
Sun Deck spanning the Master Suite, Study and Bedrooms
Hardwood Floors
Granite Countertops in Kitchen and Master
10 ft. First Floor Ceilings
9 ft. Second Floor Ceilings

House plan provided by:
EPLANS.COM

Sales Information

For more information about available properties at Brigadoon Village, contact Coldwell Banker On Site Realty:

Sonya Inman
Realtor/Owner
sonyainman@aol.com
sonyainman.net
256.777.0765 direct

Troy Elmore
Broker, Owner
trelmore@aol.com
troyelmore.com
256.777.3710 direct
256.679.6353 cell

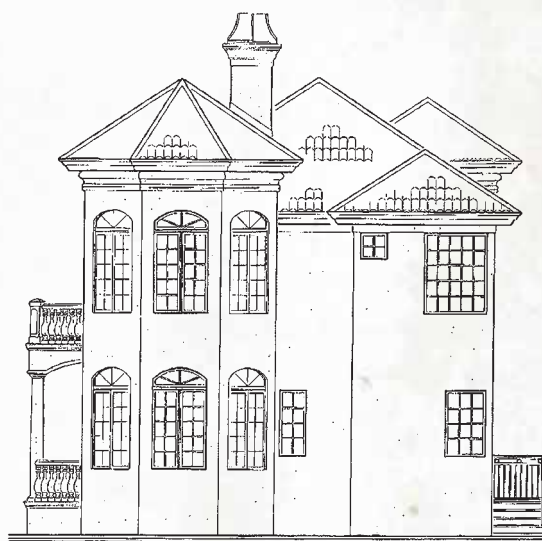
Coldwell Banker On Site Realty
coldwellbankerrealty.org
1804 Hwy 72
Athens, AL 35613
256.232.9604 office
256.232.9583 fax



Veranda House



FRONT ELEVATION



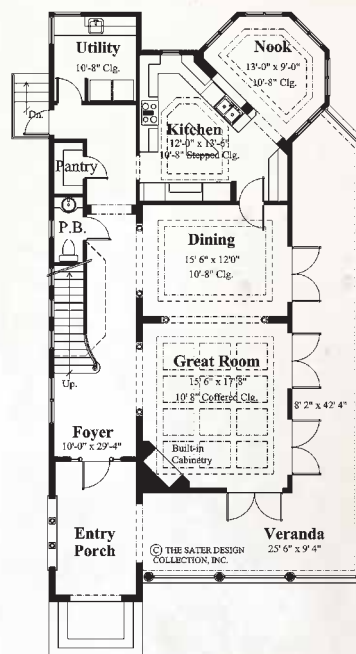
REAR ELEVATION

This Casa Bellissima is pure Italianate elegance. Four double doors wrapping around the great room and dining area open to the stunning veranda. All second floor rooms open to the lovely upper deck.

THE ELEVATION AND FLOOR PLANS CONTAINED HEREIN ARE NOT TO SCALE AND ARE GRAPHIC ILLUSTRATIONS FOR MARKETING AND PRESENTATION PURPOSES ONLY. THEY DO NOT CONSTITUTE A CONTRACT OR GUARANTEE ON THE PART OF EGYPT BLUFF PROPERTIES, OR A MEMBER OF OUR BUILDER'S GUILD. ACTUAL HOMES MAY VARY PRIOR TO OR DURING CONSTRUCTION. EXTERIOR MATERIALS MAY VARY. SOME FEATURES MAY BE OPTIONAL. ACCORDINGLY, NEITHER THE MATERIALS, NOR ANY COMMUNICATION MADE OR GIVEN IN THE CONNECTION WITH THESE MATERIALS, MAY BE DEEMED TO CONSTITUTE ANY REPRESENTATION OR WARRANTY OR MAY OTHERWISE BE RELIED UPON BY ANY PERSON OR ENTITY UNLESS CONVEYED IN WRITTEN FORM. ALL BUILDERS' GUILD MEMBERS RESERVE THE RIGHT TO SUBSTITUTE MATERIALS AND COMPONENTS OF SIMILAR QUALITY, AND TO CHANGE FEATURES, OPTIONS, PRICE AND ARCHITECTURAL DETAILS WITHOUT PRIOR NOTICE.

Veranda House

The great room is enhanced by a coffered ceiling, while the entire first floor is bathed in sunlight from a wall of glass doors opening to the veranda. The dining room connects to a gourmet island kitchen. Upstairs, a beautiful deck wraps gracefully around the family bedrooms. The master suite is a skylit haven enhanced by a bayed sitting area, which features a vaulted "octagonal" ceiling and a cozy two-sided fireplace. Private double doors access the sun deck from the master suite.

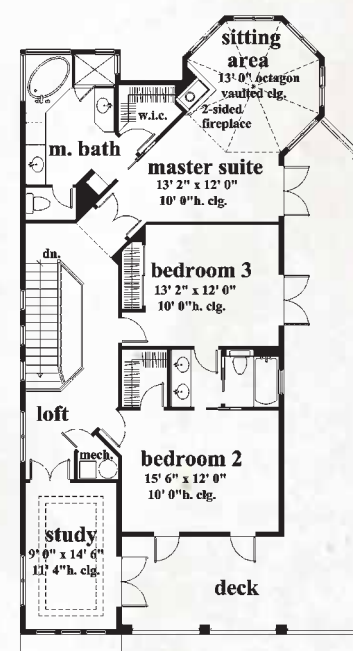


MAIN LEVEL

Each home's front façade will begin 15 feet from the edge of the lot providing ample room for a front lawn. Each front lawn will be landscaped with a canopy tree, ornamental tree and a combination of evergreen and flowering foliage, thus, creating the feel of historic, traditional neighborhoods.

A wonderful, intimate courtyard will provide a private getaway for each homeowner. Here the owner may find an outdoor kitchen, fireplace or lovely garden screened by evergreen foliage from the adjacent homes. Underground irrigation for each home site will provide convenience to the homeowners and a lush look to the entire community.

All Avenue and Cottage lots will have rear entry alleyway garages preserving the beautiful front streetscapes. Each garage will be generously sized, accommodating two large vehicles and providing abundant storage. In most cases, covered breezeways will connect the garage to the main house. Lovely wrought iron mailboxes will be located on the alleyways for convenient retrieval of mail.



UPPER LEVEL



THE ELEVATION AND FLOOR PLANS CONTAINED HEREIN ARE NOT TO SCALE AND ARE GRAPHIC ILLUSTRATIONS FOR MARKETING AND PRESENTATION PURPOSES ONLY. THEY DO NOT CONSTITUTE A CONTRACT OR GUARANTEE ON THE PART OF EGYPT BLUFF PROPERTIES, OR A MEMBER OF OUR BUILDER'S GUILD. ACTUAL HOMES MAY VARY PRIOR TO OR DURING CONSTRUCTION. EXTERIOR MATERIALS MAY VARY. SOME FEATURES MAY BE OPTIONAL. ACCORDINGLY, NEITHER THE MATERIALS, NOR ANY COMMUNICATION MADE OR GIVEN IN THE CONNECTION WITH THESE MATERIALS, MAY BE DEEMED TO CONSTITUTE ANY REPRESENTATION OR WARRANTY OR MAY OTHERWISE BE RELIED UPON BY ANY PERSON OR ENTITY UNLESS CONVEYED IN WRITTEN FORM. ALL BUILDERS' GUILD MEMBERS RESERVE THE RIGHT TO SUBSTITUTE MATERIALS AND COMPONENTS OF SIMILAR QUALITY, AND TO CHANGE FEATURES, OPTIONS, PRICE AND ARCHITECTURAL DETAILS WITHOUT PRIOR NOTICE.