

BRIGADOON



BRIGADOONVILLAGE.COM

Features

2,403 sq. ft. Total
4 Bedrooms
3 1/2 Baths

Amenities

Fireplace in Great Room
Vaulted Great Room Ceiling
First Floor Master Suite with
Fireplace
First Floor Laundry
Screen Porch off the Kitchen
Veranda spanning the Master,
Great Room and Kitchen
Hardwood Floors
Granite Countertops in Kitchen and
Master
10 ft. Ceilings on First Floor
9 ft. Ceilings on Second Floor

House plan provided by:
EPLANS.COM

Sales Information

For more information about available properties at
Brigadoon Village, contact Coldwell Banker On Site Realty:

Sonya Inman
Realtor/Owner
sonyainman@aol.com
sonyainman.net
256.777.0765 direct

Troy Elmore
Broker, Owner
trelmore@aol.com
troyelmore.com
256.777.3710 direct
256.679.6353 cell

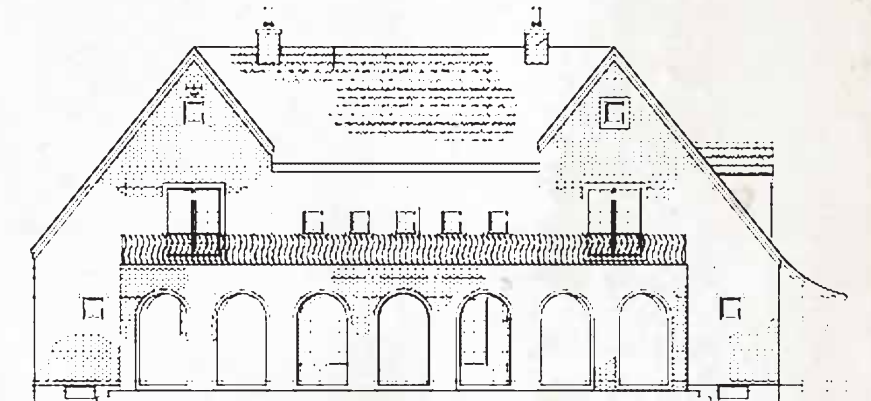
Coldwell Banker On Site Realty
coldwellbankerrealty.org
1804 Hwy 72
Athens, AL 35613
256.232.9604 office
256.232.9583 fax



Fox Cottage



FRONT ELEVATION



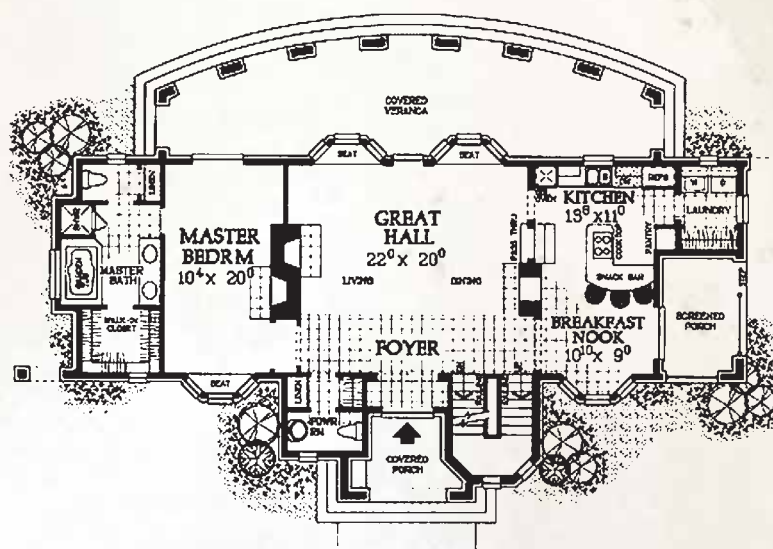
REAR ELEVATION

Be the owner of your own country estate – this two-story home gives the look and feel of grand-style living without the expense of large square footage.

THE ELEVATION AND FLOOR PLANS CONTAINED HEREIN ARE NOT TO SCALE AND ARE GRAPHIC ILLUSTRATIONS FOR MARKETING AND PRESENTATION PURPOSES ONLY. THEY DO NOT CONSTITUTE A CONTRACT OR GUARANTEE ON THE PART OF EGYPT BLUFF PROPERTIES, OR A MEMBER OF OUR BUILDER'S GUILD. ACTUAL HOMES MAY VARY PRIOR TO OR DURING CONSTRUCTION. EXTERIOR MATERIALS MAY VARY. SOME FEATURES MAY BE OPTIONAL. ACCORDINGLY, NEITHER THE MATERIALS, NOR ANY COMMUNICATION MADE OR GIVEN IN THE CONNECTION WITH THESE MATERIALS, MAY BE DEEMED TO CONSTITUTE ANY REPRESENTATION OR WARRANTY OR MAY OTHERWISE BE RELIED UPON BY ANY PERSON OR ENTITY UNLESS CONVEYED IN WRITTEN FORM. ALL BUILDERS' GUILD MEMBERS RESERVE THE RIGHT TO SUBSTITUTE MATERIALS AND COMPONENTS OF SIMILAR QUALITY, AND TO CHANGE FEATURES, OPTIONS, PRICE AND ARCHITECTURAL DETAILS WITHOUT PRIOR NOTICE.

For Cottage

The entry leads to a massive foyer and great hall. There's space enough here for living and dining areas. Two window seats in the great hall overlook the rear veranda. One fireplace warms the living area, while another looks through the dining room to the kitchen and breakfast nook. A screened porch offers casual dining space for warm weather. The master suite has another fireplace and window seat and adjoins a luxurious master bath with separate tub and shower.

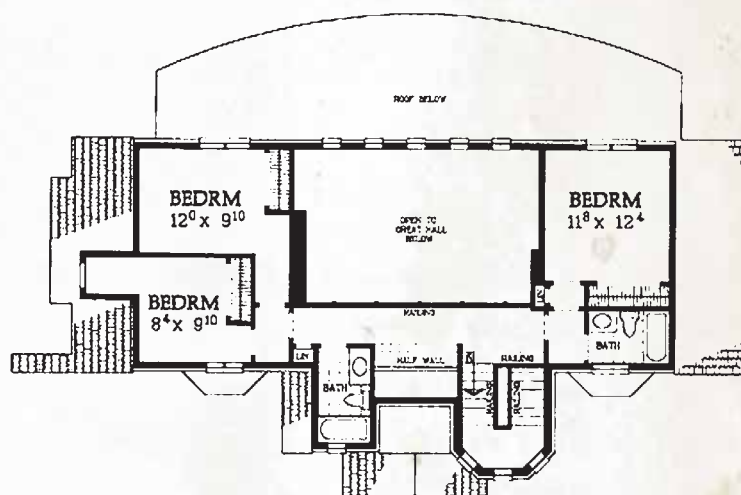


MAIN LEVEL

Each home's front façade will begin 15 feet from the edge of the lot providing ample room for a front lawn. Each front lawn will be landscaped with a canopy tree, ornamental tree and a combination of evergreen and flowering foliage, thus, creating the feel of historic, traditional neighborhoods.

A wonderful, intimate courtyard will provide a private getaway for each homeowner. Here the owner may find an outdoor kitchen, fireplace or lovely garden screened by evergreen foliage from the adjacent homes. Underground irrigation for each home site will provide convenience to the homeowners and a lush look to the entire community.

All Avenue and Cottage lots will have rear entry alleyway garages preserving the beautiful front streetscapes. Each garage will be generously sized, accommodating two large vehicles and providing abundant storage. In most cases, covered breezeways will connect the garage to the main house. Lovely wrought iron mailboxes will be located on the alleyways for convenient retrieval of mail.



UPPER LEVEL



MARKETED BY
THE ELEVATION AND FLOOR PLANS CONTAINED HEREIN ARE NOT TO SCALE AND ARE GRAPHIC ILLUSTRATIONS FOR MARKETING AND PRESENTATION PURPOSES ONLY. THEY DO NOT CONSTITUTE A CONTRACT OR GUARANTEE ON THE PART OF EGYPT BLUFF PROPERTIES, OR A MEMBER OF OUR BUILDER'S GUILD. ACTUAL HOMES MAY VARY PRIOR TO OR DURING CONSTRUCTION. EXTERIOR MATERIALS MAY VARY. SOME FEATURES MAY BE OPTIONAL. ACCORDINGLY, NEITHER THE MATERIALS, NOR ANY COMMUNICATION MADE OR GIVEN IN THE CONNECTION WITH THESE MATERIALS, MAY BE DEEMED TO CONSTITUTE ANY REPRESENTATION OR WARRANTY OR MAY OTHERWISE BE RELIED UPON BY ANY PERSON OR ENTITY UNLESS CONVEYED IN WRITTEN FORM. ALL BUILDERS' GUILD MEMBERS RESERVE THE RIGHT TO SUBSTITUTE MATERIALS AND COMPONENTS OF SIMILAR QUALITY, AND TO CHANGE FEATURES, OPTIONS, PRICE AND ARCHITECTURAL DETAILS WITHOUT PRIOR NOTICE.