

BRIGADOON



BRIGADOONVILLAGE.COM

### Features

2,865 sq. ft. Total  
4 Bedrooms  
3 1/2 Baths

### Amenities

Fireplace in Great Room and Living Room  
Vaulted Ceiling in Great Room  
First Floor Master Suite  
Fireplace in Living Room/Study  
First Floor Laundry  
Veranda off the Master Suite, Great Room and Kitchen  
Hardwood Floors  
Granite Countertops in Kitchen and Master  
10 ft. First Floor Ceilings  
9 ft. Second Floor Ceilings

House plan provided by:  
STEPHENFULLER.COM

### Sales Information

For more information about available properties at Brigadoon Village, contact Coldwell Banker On Site Realty:

**Sonya Inman**  
Realtor/Owner  
sonyainman@aol.com  
sonyainman.net  
256.777.0765 direct

**Troy Elmore**  
Broker, Owner  
trelmore@aol.com  
troyelmore.com  
256.777.3710 direct  
256.679.6353 cell

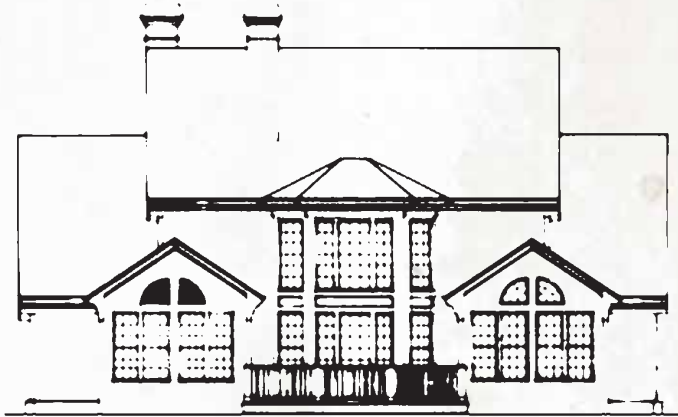
**Coldwell Banker On Site Realty**  
coldwellbankerrealty.org  
1804 Hwy 72  
Athens, AL 35613  
256.232.9604 office  
256.232.9583 fax



## Chestnut House



FRONT ELEVATION



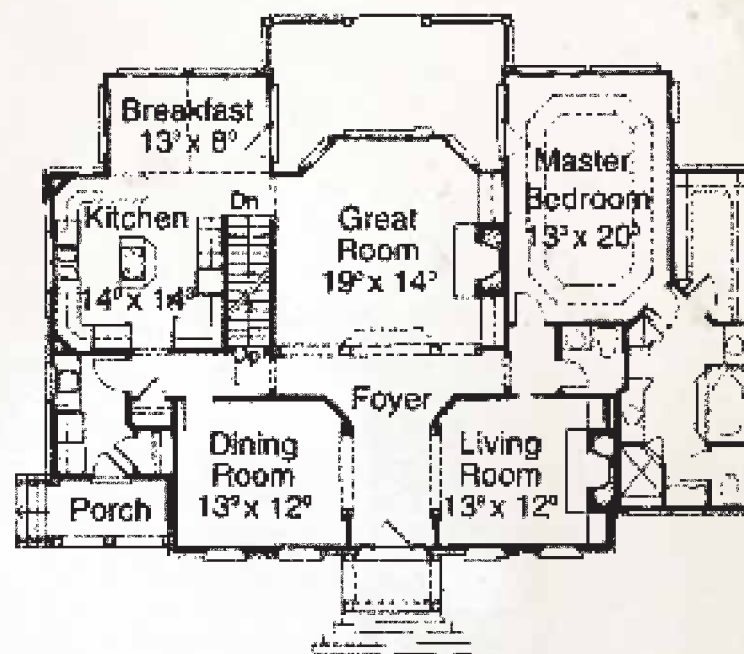
REAR ELEVATION

The classical styling of this colonial home, designed by respected architect Steven Fuller, will be appreciated for years. Grand in the use of brick and wood details, its windows dressed with shutters and brick jack arches add warmth to its exterior.

THE ELEVATION AND FLOOR PLANS CONTAINED HEREIN ARE NOT TO SCALE AND ARE GRAPHIC ILLUSTRATIONS FOR MARKETING AND PRESENTATION PURPOSES ONLY. THEY DO NOT CONSTITUTE A CONTRACT OR GUARANTEE ON THE PART OF EGYPT BLUFF PROPERTIES, OR A MEMBER OF OUR BUILDER'S GUILD. ACTUAL HOMES MAY VARY PRIOR TO OR DURING CONSTRUCTION. EXTERIOR MATERIALS MAY VARY. SOME FEATURES MAY BE OPTIONAL. ACCORDINGLY, NEITHER THE MATERIALS, NOR ANY COMMUNICATION MADE OR GIVEN IN THE CONNECTION WITH THESE MATERIALS, MAY BE DEEMED TO CONSTITUTE ANY REPRESENTATION OR WARRANTY OR MAY OTHERWISE BE RELIED UPON BY ANY PERSON OR ENTITY UNLESS CONVEYED IN WRITTEN FORM. ALL BUILDERS' GUILD MEMBERS RESERVE THE RIGHT TO SUBSTITUTE MATERIALS AND COMPONENTS OF SIMILAR QUALITY, AND TO CHANGE FEATURES, OPTIONS, PRICE AND ARCHITECTURAL DETAILS WITHOUT PRIOR NOTICE.

## Chestnut House

As you walk inside the quality of this home's space and openness is immediately evident. The foyer opens to both a banquet size dining room and formal living room/study, including fireplace. Just beyond, subtly defined with the use of columns and arched openings is the two story great room which is bathed in sunlight by the large windows. The entire right side of the main level becomes the sumptuous master suite. A dramatic tray ceiling and a wall of glass make this master suite on to be remembered. The other side of the main level includes a large kitchen that is conveniently situated with the cooking island adjoining the breakfast room and just steps away from the laundry. Moving upstairs, from one of the three bedrooms to another you will pass the open railing that looks into the great room below.

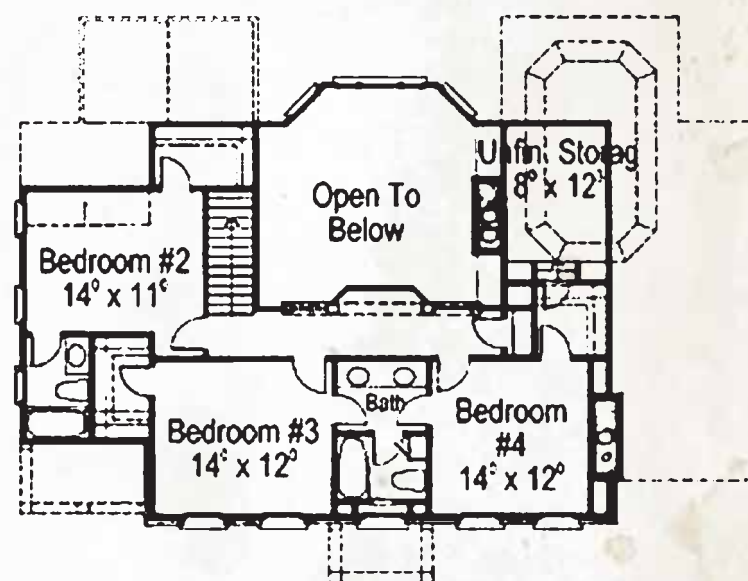


MAIN LEVEL

Each home's front façade will begin 15 feet from the edge of the lot providing ample room for a front lawn. Each front lawn will be landscaped with a canopy tree, ornamental tree and a combination of evergreen and flowering foliage, thus, creating the feel of historic, traditional neighborhoods.

A wonderful, intimate courtyard will provide a private getaway for each homeowner. Here the owner may find an outdoor kitchen, fireplace or lovely garden screened by evergreen foliage from the adjacent homes. Underground irrigation for each home site will provide convenience to the homeowners and a lush look to the entire community.

All Avenue and Cottage lots will have rear entry alleyway garages preserving the beautiful front streetscapes. Each garage will be generously sized, accommodating two large vehicles and providing abundant storage. In most cases, covered breezeways will connect the garage to the main house. Lovely wrought iron mailboxes will be located on the alleyways for convenient retrieval of mail.



UPPER LEVEL



THE ELEVATION AND FLOOR PLANS CONTAINED HEREIN ARE NOT TO SCALE AND ARE GRAPHIC ILLUSTRATIONS FOR MARKETING AND PRESENTATION PURPOSES ONLY. THEY DO NOT CONSTITUTE A CONTRACT OR GUARANTEE ON THE PART OF EGYPT BLUFF PROPERTIES, OR A MEMBER OF OUR BUILDER'S GUILD. ACTUAL HOMES MAY VARY PRIOR TO OR DURING CONSTRUCTION. EXTERIOR MATERIALS MAY VARY. SOME FEATURES MAY BE OPTIONAL. ACCORDINGLY, NEITHER THE MATERIALS, NOR ANY COMMUNICATION MADE OR GIVEN IN THE CONNECTION WITH THESE MATERIALS, MAY BE DEEMED TO CONSTITUTE ANY REPRESENTATION OR WARRANTY OR MAY OTHERWISE BE RELIED UPON BY ANY PERSON OR ENTITY UNLESS CONVEYED IN WRITTEN FORM. ALL BUILDERS' GUILD MEMBERS RESERVE THE RIGHT TO SUBSTITUTE MATERIALS AND COMPONENTS OF SIMILAR QUALITY, AND TO CHANGE FEATURES, OPTIONS, PRICE AND ARCHITECTURAL DETAILS WITHOUT PRIOR NOTICE.